

# **Wireless Local Area Network Configuration Guide For Windows XP (eduroam)**

**College of Professional and Continuing Education  
The Hong Kong Polytechnic University**

**Staff Version**

**Version 1.1**

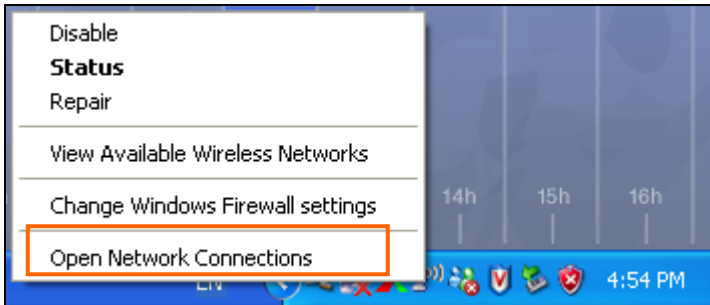
ITU Helpdesk: 3746-0818 (HHB) / 3746-0819 (WK)

Email: [pfitoper@cpce-polyu.edu.hk](mailto:pfitoper@cpce-polyu.edu.hk)

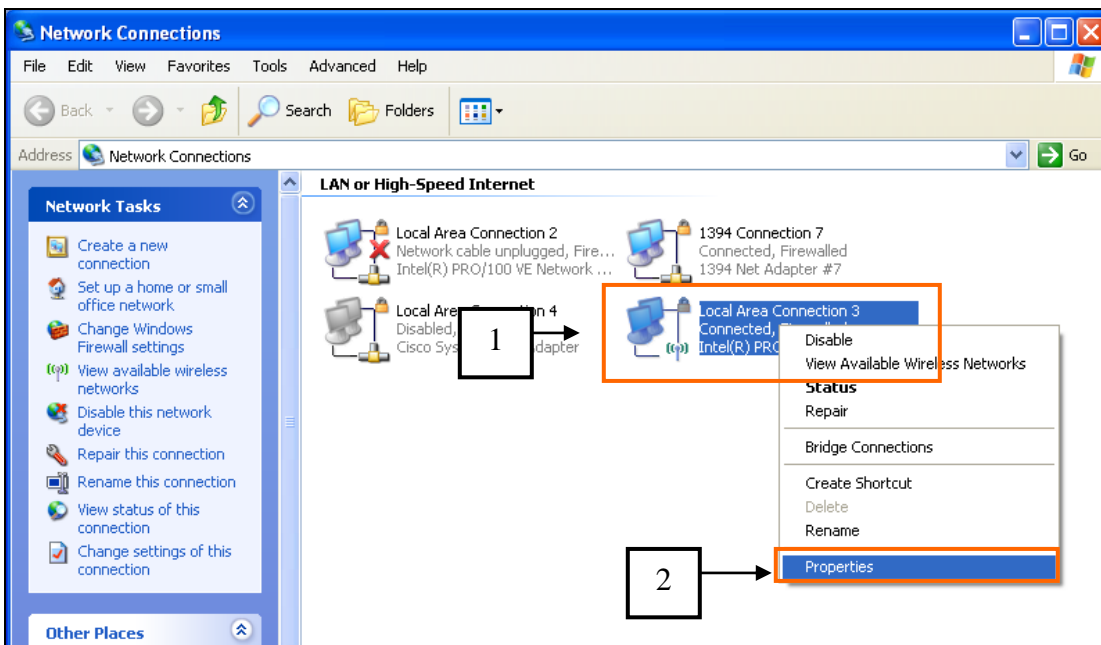
---



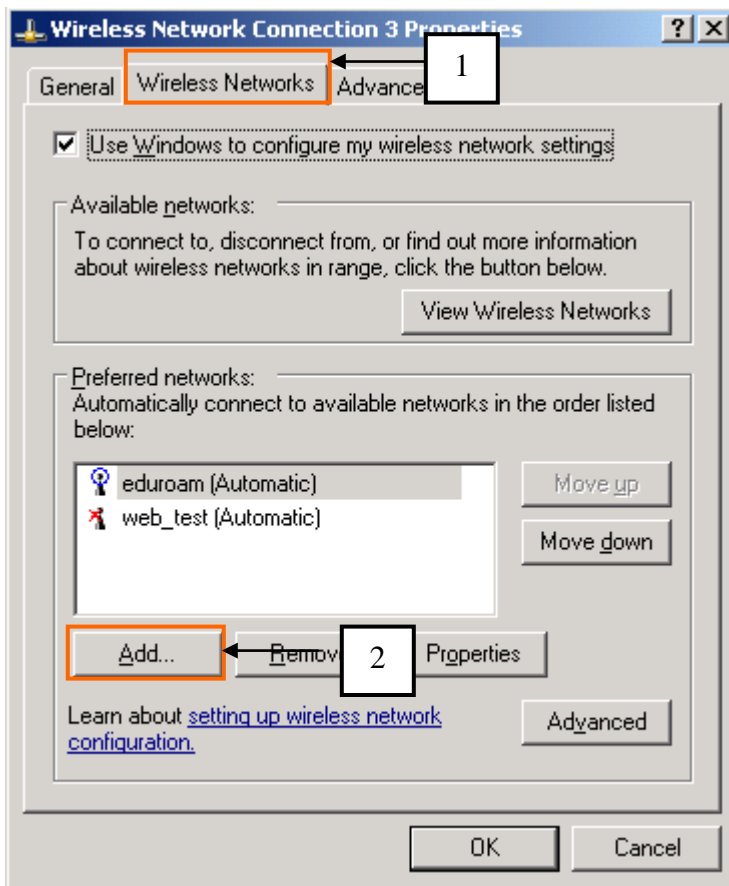
1. Right click the “Network” icon on taskbar



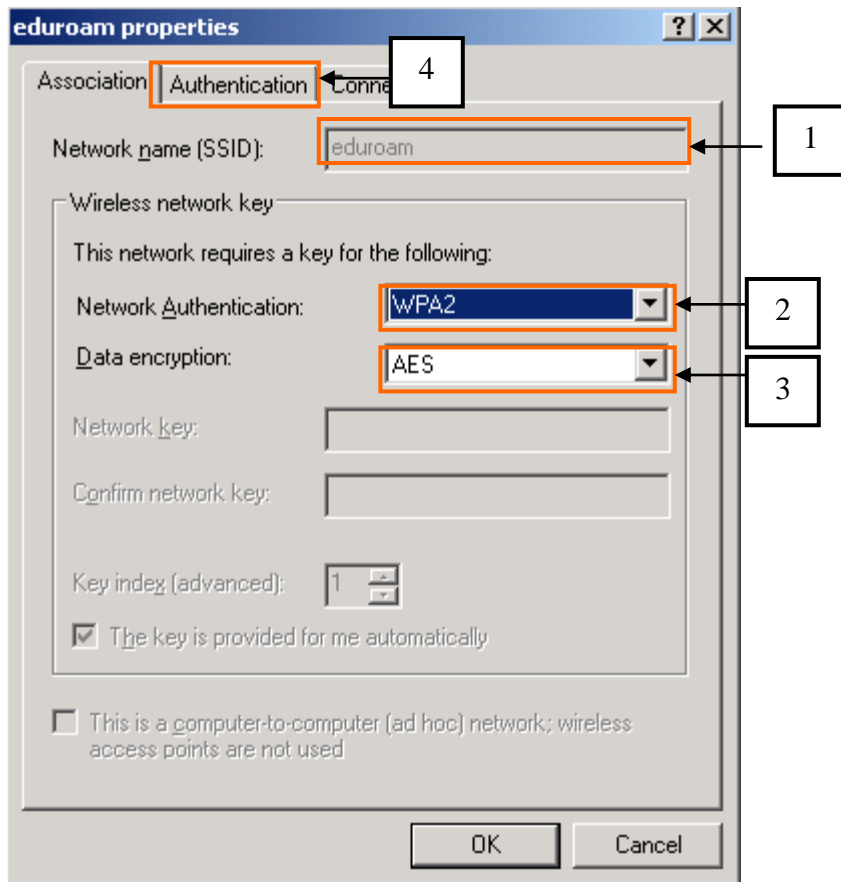
2. Click to select “Open Network Connections”



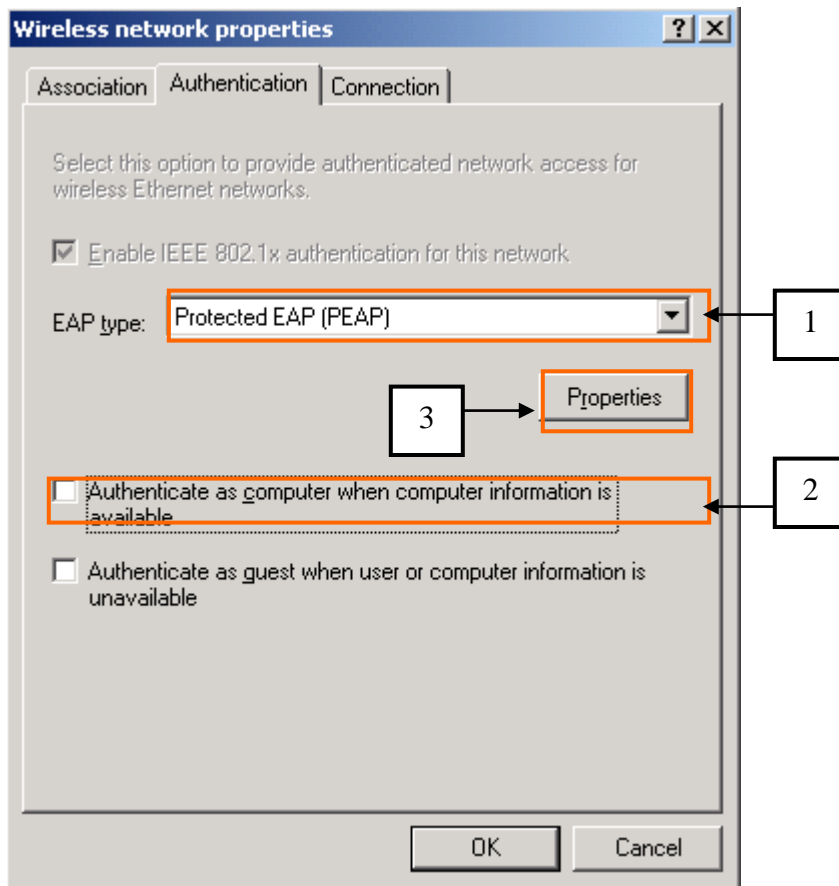
3. Right click on your wireless network device and select “Properties”



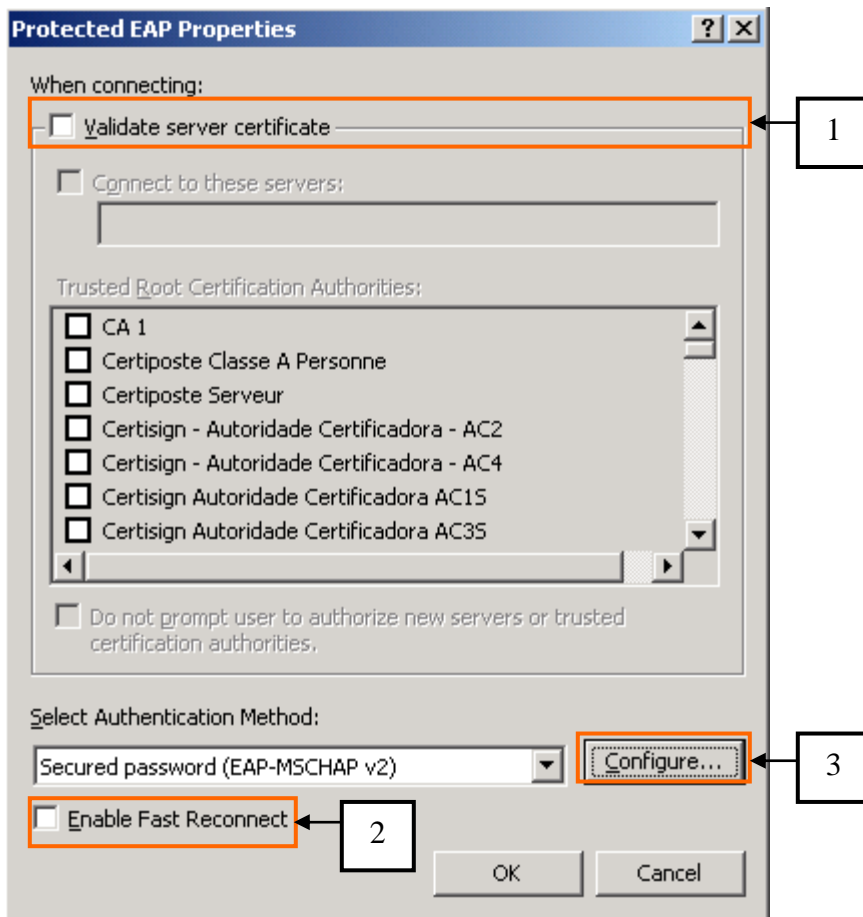
4. In the “Properties” window
  - 4.1. Select “Wireless Networks” tab
  - 4.2. Press “Add”



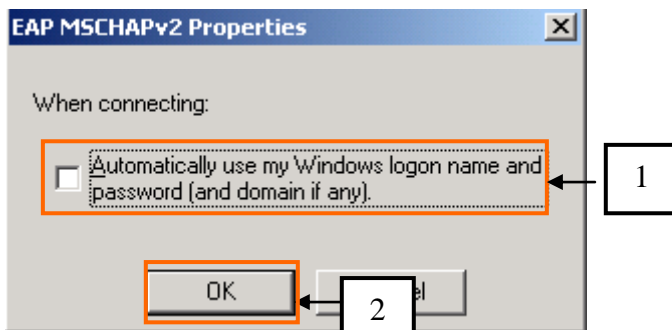
5. Change the settings of the followings in “Association” tab
  - 5.1. Network name (SSID): **eduroam**
  - 5.2. Network Authentication: “**WPA2-Enterprise**”
  - 5.3. Data encryption: **AES**
  - 5.4. Click “Authentication” tab



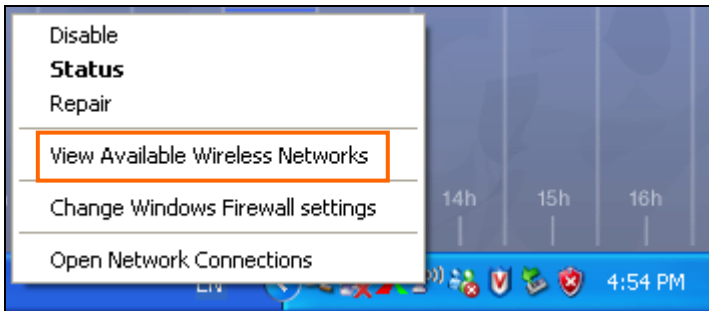
6. Change the settings of the followings in “Authentication” tab
  - 6.1. EAP type: “Protected EAP (PEAP)”
  - 6.2. Uncheck “Authenticate as computer when computer information is available”
  - 6.3. Press “Properties”



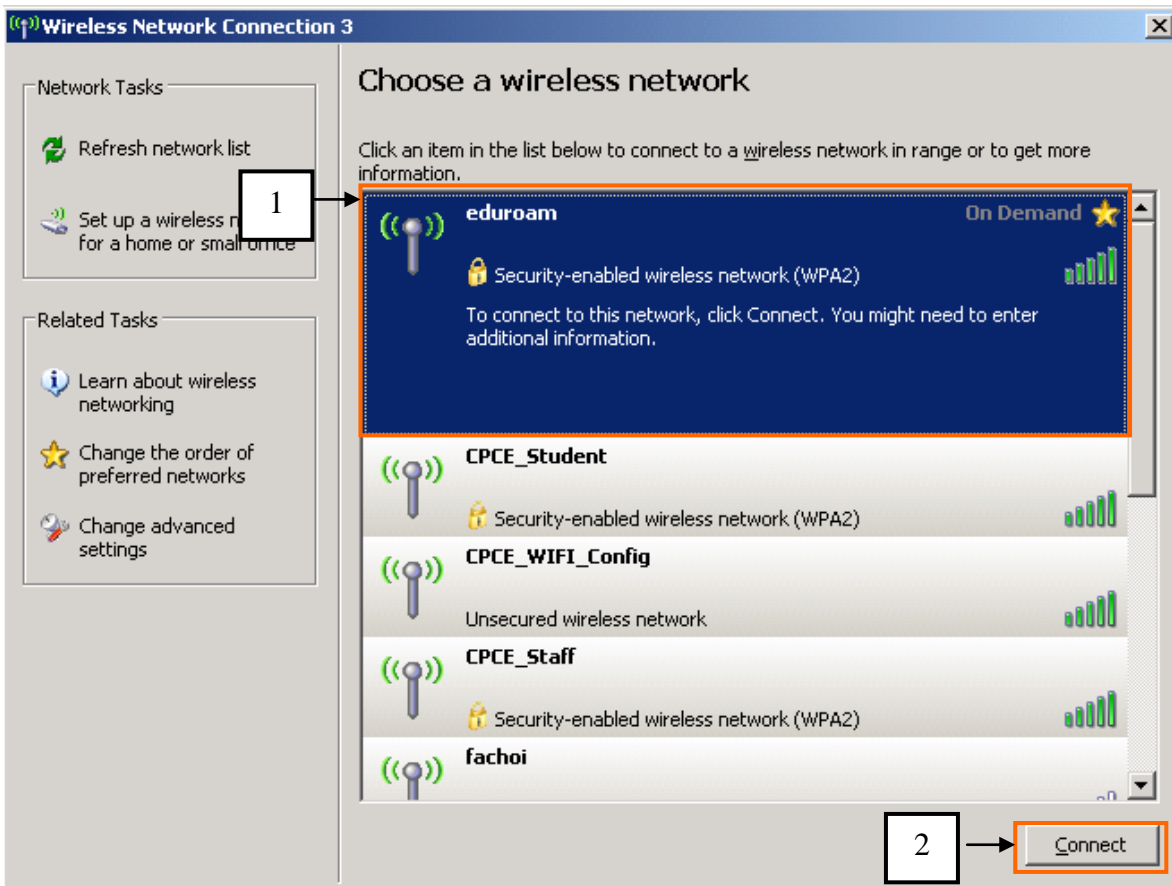
7. Change the settings of the followings in "Protected EAP Properties"
  - 7.1. Uncheck "Validate server certificate"
  - 7.2. Uncheck "Enable Fast Reconnect"
  - 7.3. Press "Configure"



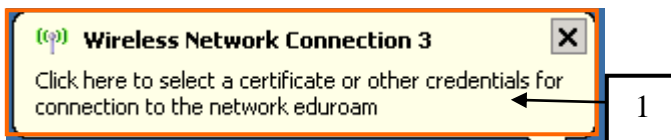
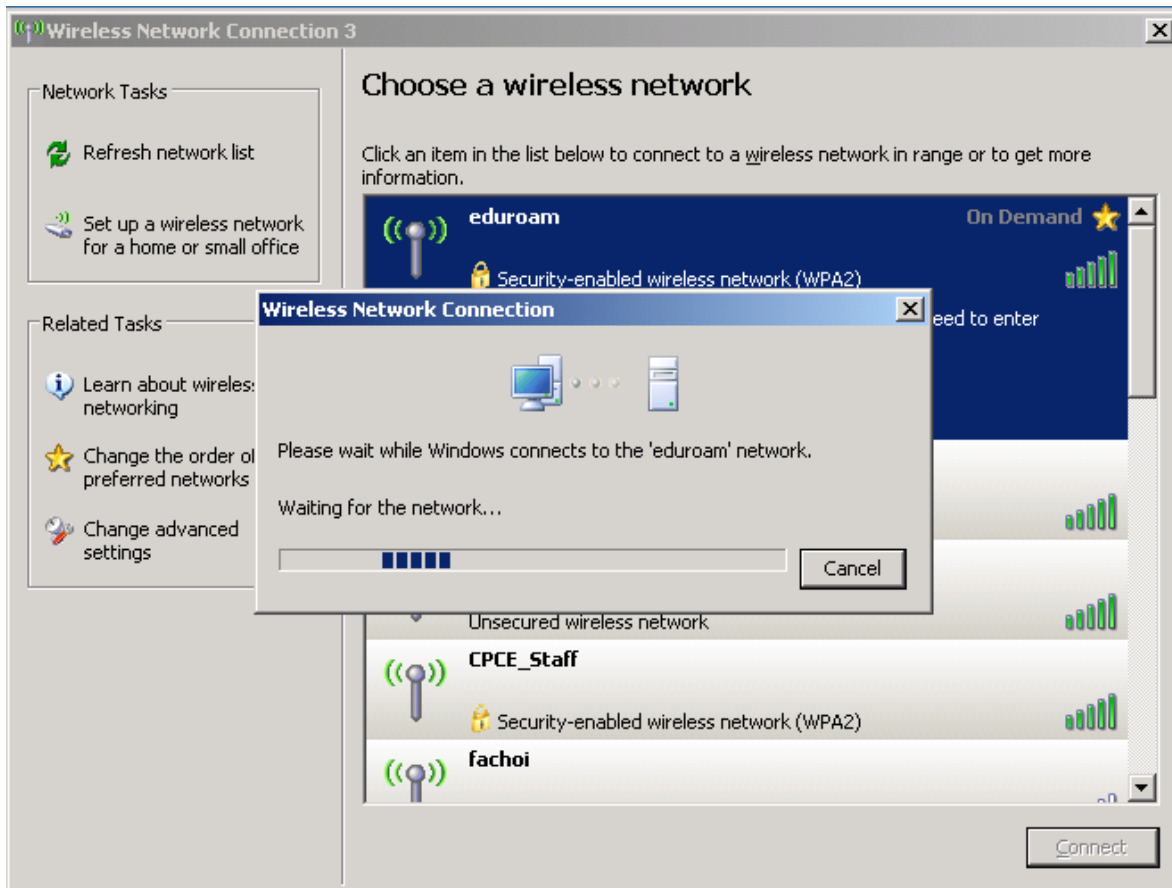
8. Change the settings of the followings in the "EAP MSCHAPv2 Properties" windows
  - 8.1. Uncheck "Automatically use my Windows logon name and password (and domain if any)"
  - 8.2. Press "OK"



9. Right click the “Network” icon on taskbar and select “View Available Wireless Networks”

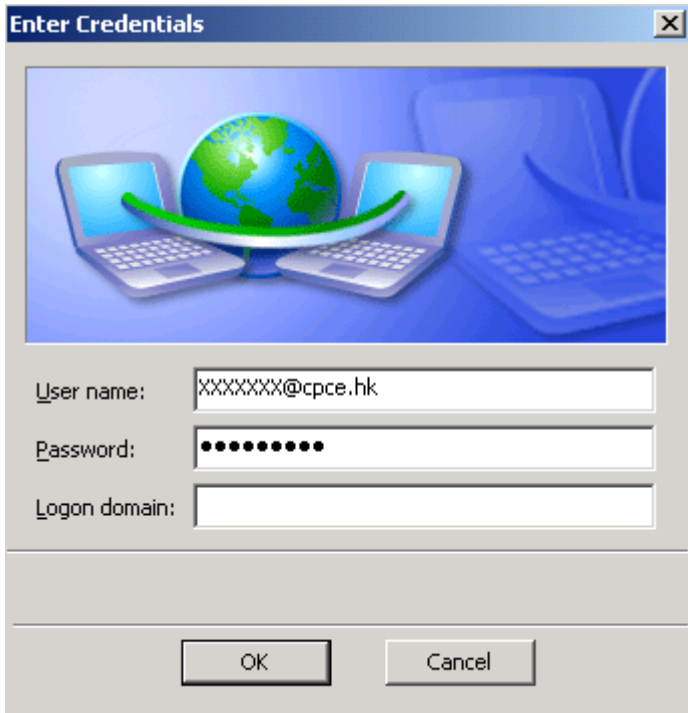


10. Select the **eduroam** and press “Connect”



11. Click on the message “Click here to select a certificate or other credentials for connection to the network ...”





Enter Credentials

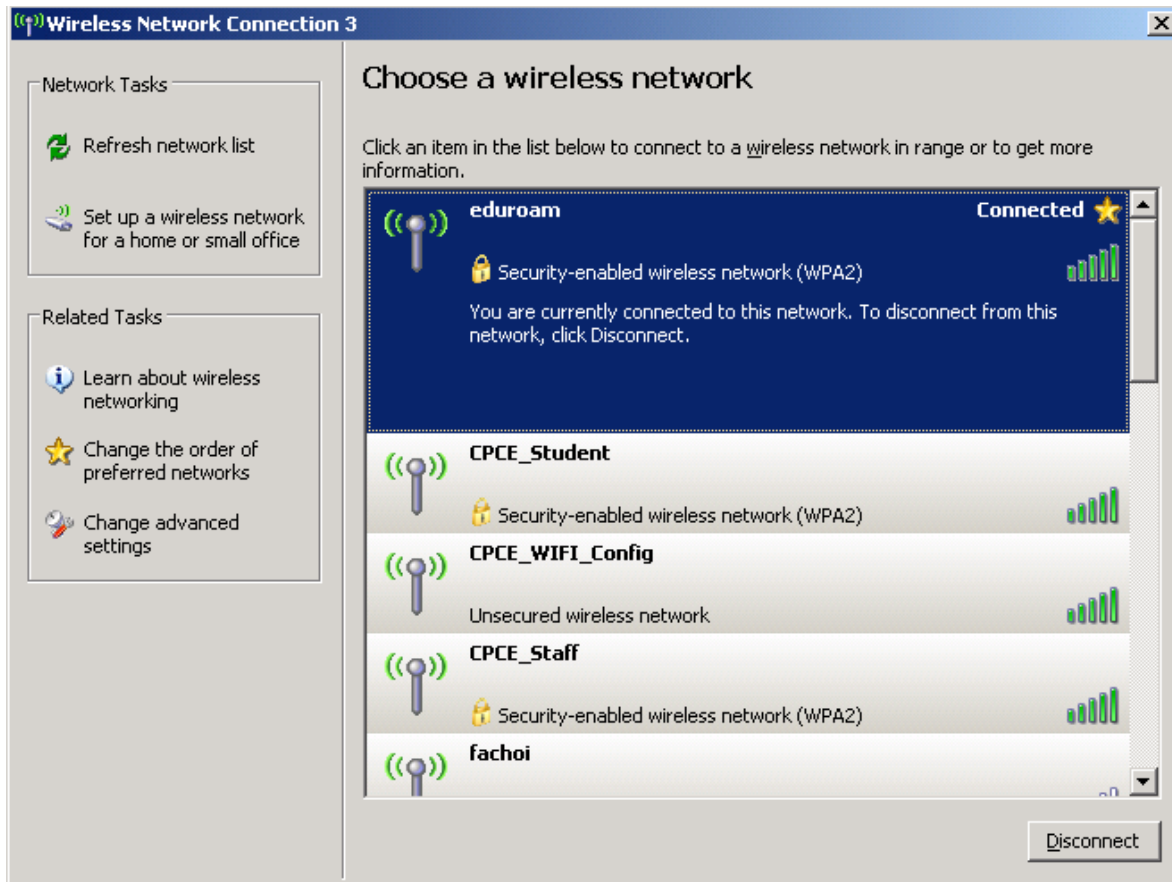
User name: XXXXXXXX@cpce.hk

Password: ●●●●●●●●●●

Logon domain:

OK Cancel

12. Enter your account information (**userID@cpce.hk** , **Password**), (the **userID** should be as same as college portal login.) User must enter **@cpce.hk** after your **userID** in the user name field.



13. Now users can use their browsers to browse the web sites.

--- End ---