

Wireless Local Area Network Configuration Guide For Windows XP (eduroam)

**College of Professional and Continuing Education
The Hong Kong Polytechnic University**

Student Version

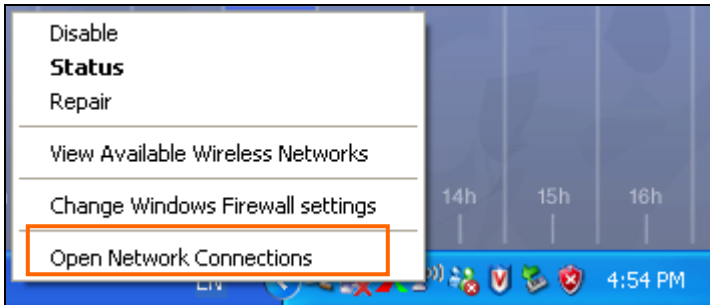
Version 1.1

ITU Helpdesk: 3746-0818 (HHB) / 3746-0819 (WK)

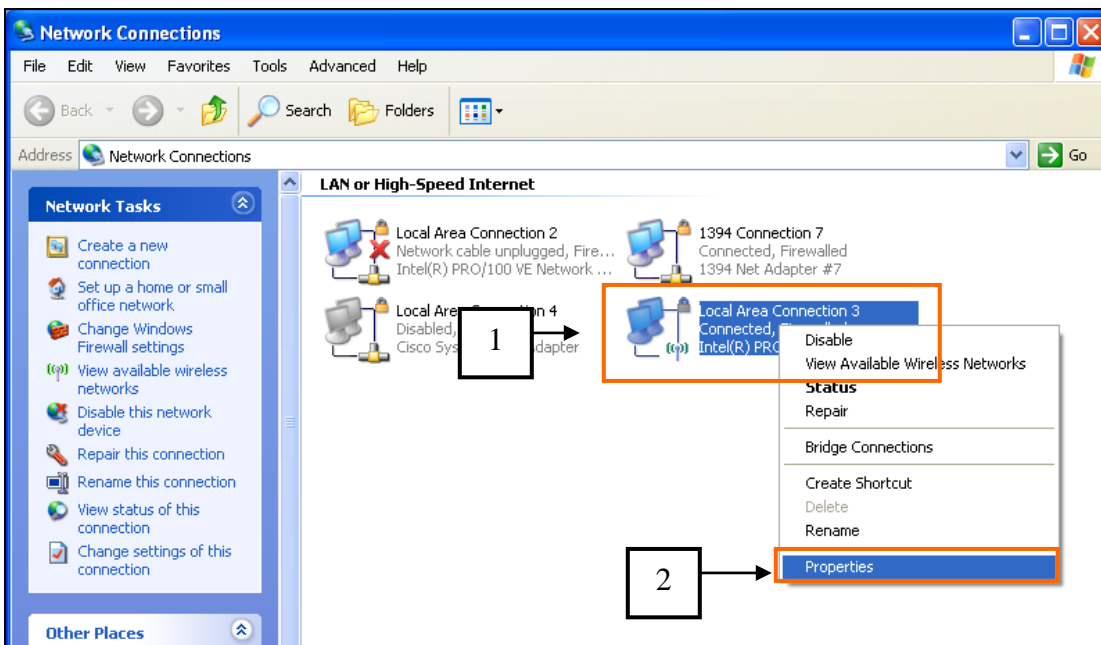
Email: pfitoper@cpce-polyu.edu.hk



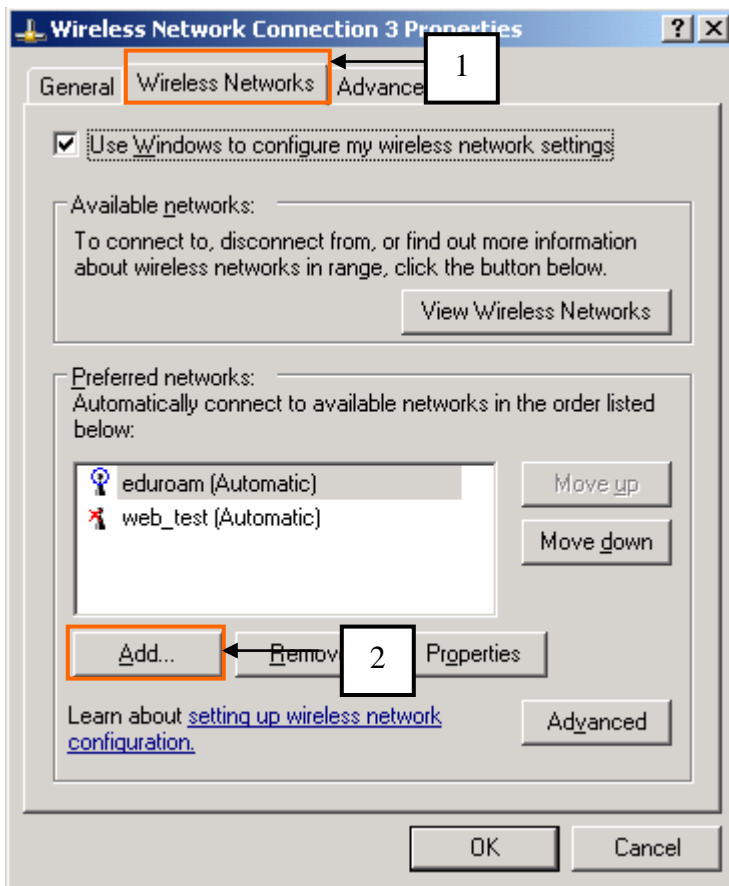
1. Right click the “Network” icon on taskbar



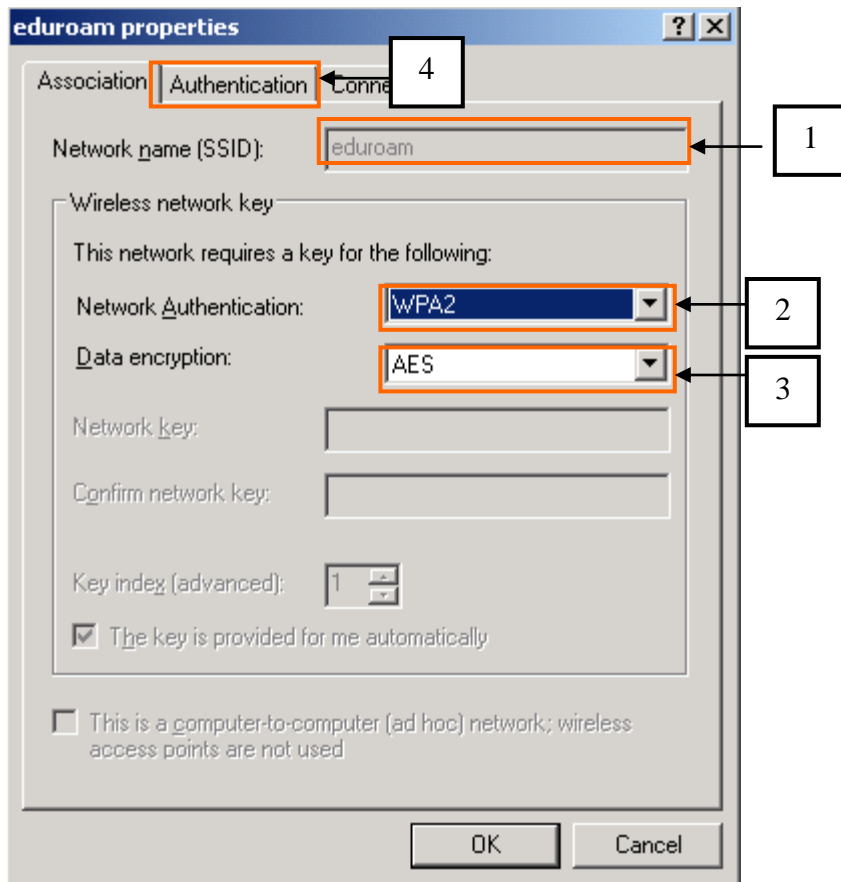
2. Click to select “Open Network Connections”



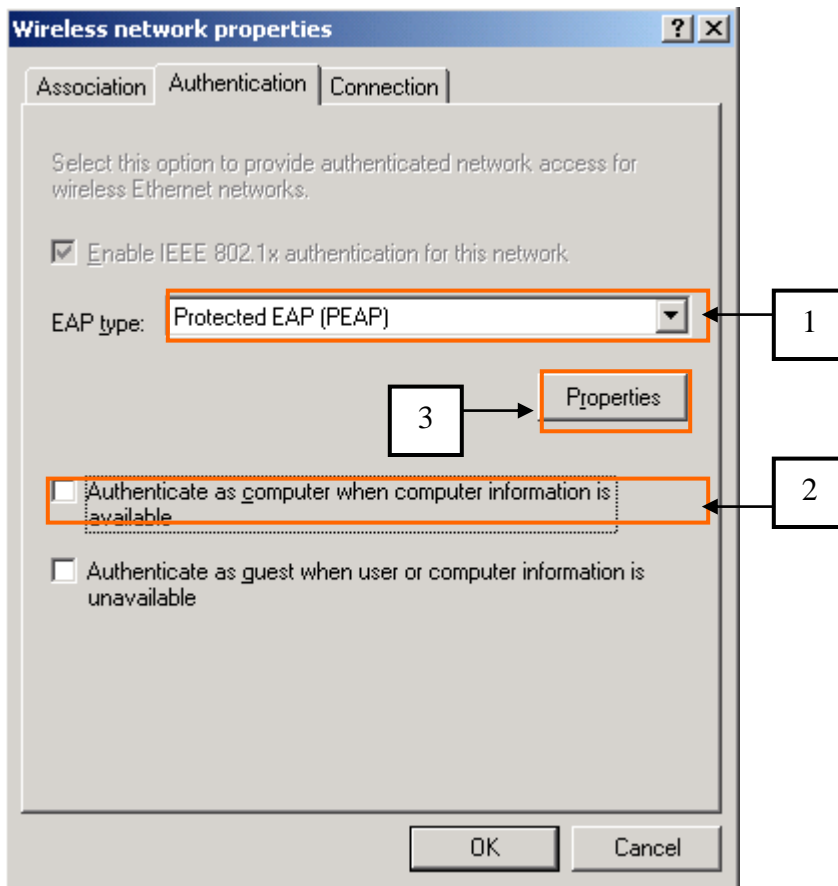
3. Right click on your wireless network device and select “Properties”



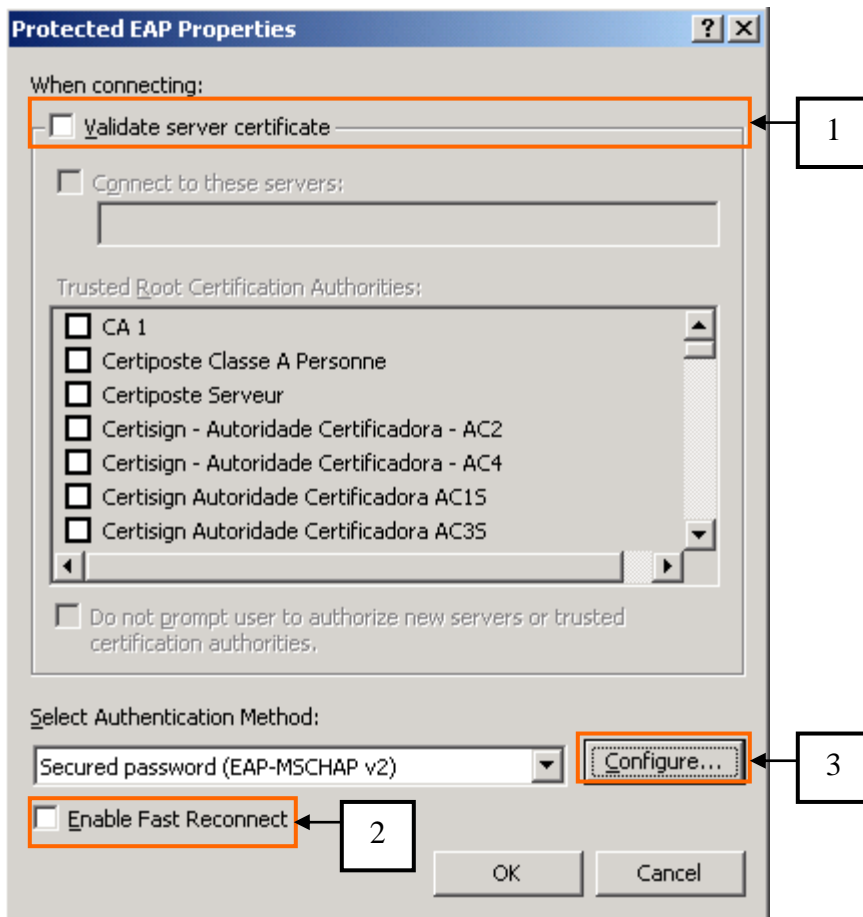
4. In the “Properties” window
 - 4.1. Select “Wireless Networks” tab
 - 4.2. Press “Add”



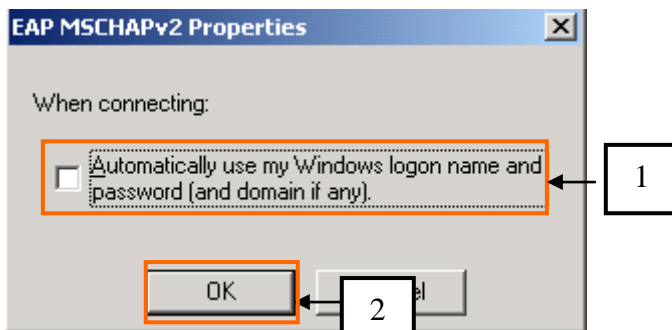
5. Change the settings of the followings in “Association” tab
 - 5.1. Network name (SSID): **eduroam**
 - 5.2. Network Authentication: “**WPA2-Enterprise**”
 - 5.3. Data encryption: **AES**
 - 5.4. Click “Authentication” tab



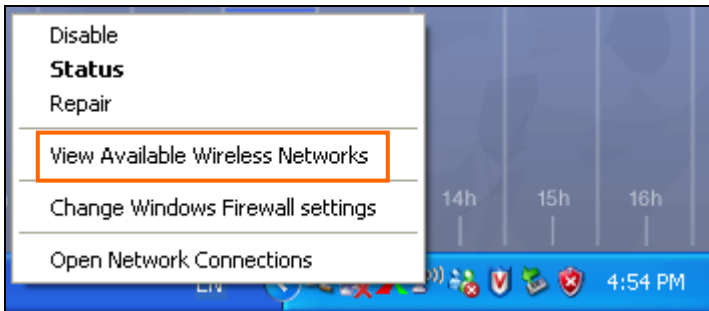
6. Change the settings of the followings in “Authentication” tab
 - 6.1. EAP type: “Protected EAP (PEAP)”
 - 6.2. Uncheck “Authenticate as computer when computer information is available”
 - 6.3. Press “Properties”



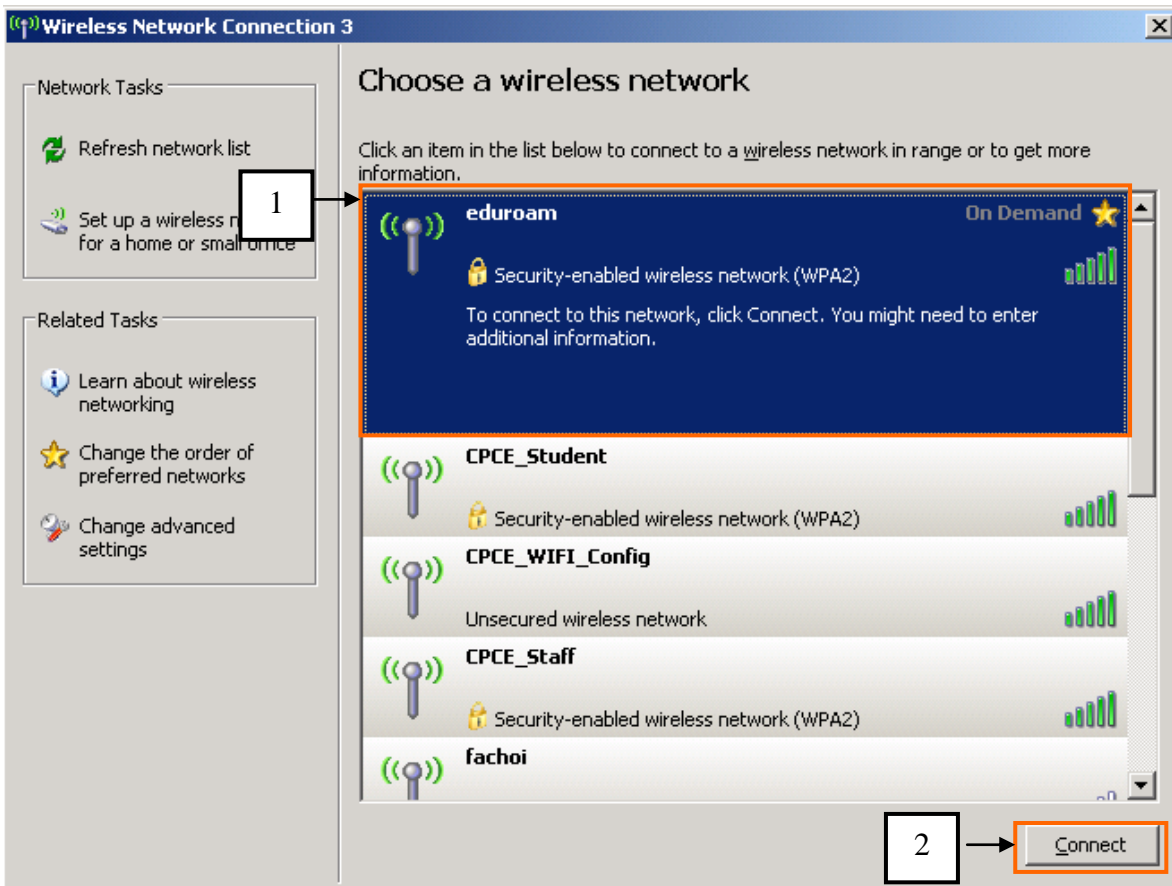
7. Change the settings of the followings in "Protected EAP Properties"
 - 7.1. Uncheck "Validate server certificate"
 - 7.2. Uncheck "Enable Fast Reconnect"
 - 7.3. Press "Configure"



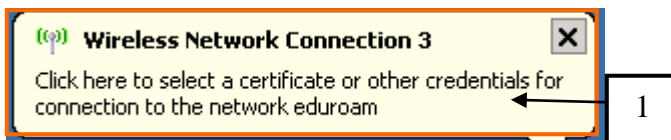
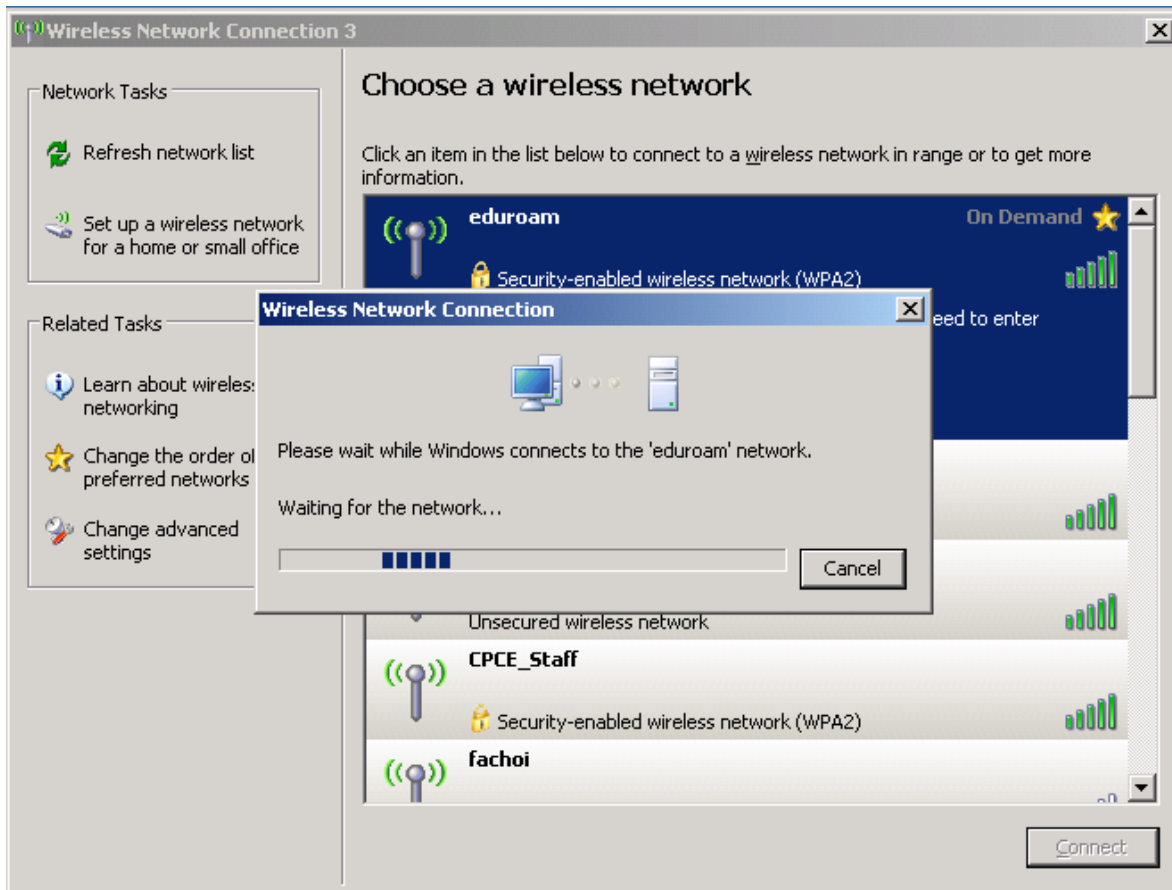
8. Change the settings of the followings in the "EAP MSCHAPv2 Properties" windows
 - 8.1. Uncheck "Automatically use my Windows logon name and password (and domain if any)"
 - 8.2. Press "OK"



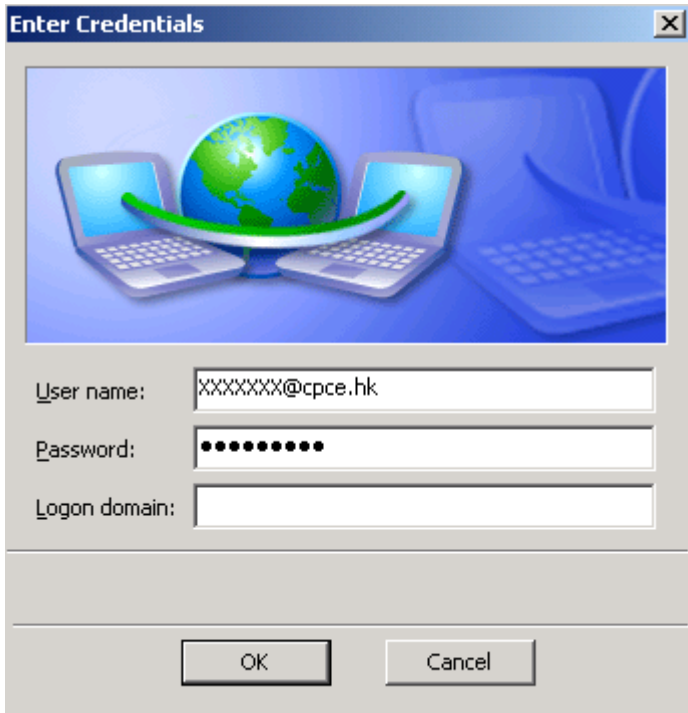
9. Right click the “Network” icon on taskbar and select “View Available Wireless Networks”



10. Select the **eduroam** and press “Connect”



11. Click on the message "Click here to select a certificate or other credentials for connection to the network ..."



Enter Credentials

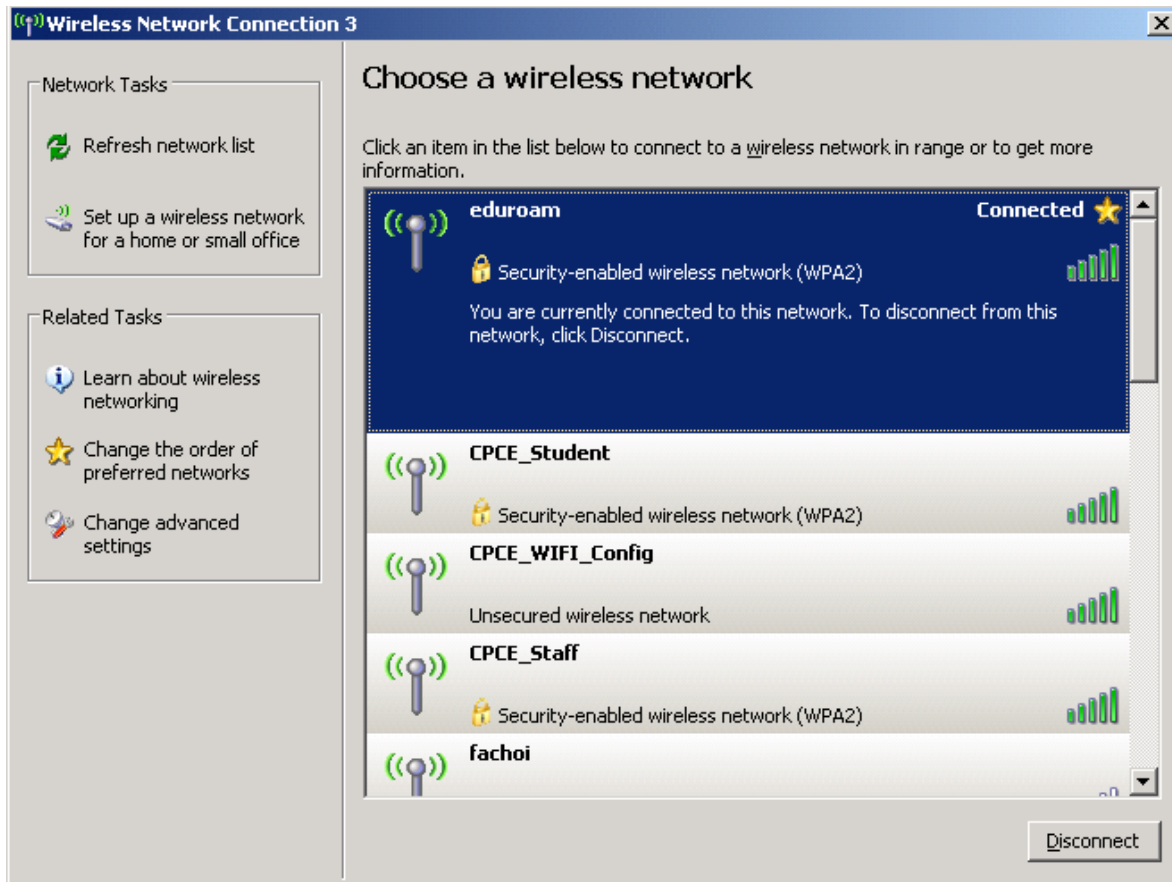
User name: XXXXXXXX@cpce.hk

Password: ●●●●●●●●●●

Logon domain:

OK Cancel

12. Enter your account information (**StudentID@cpce.hk** , **Password**), user must enter **@cpce.hk** after your **StudentID** in the user name field. (Logon domain should be empty.)



13. Now users can use their browsers to browse the web sites.

--- End ---