

Wireless Local Area Network Configuration Guide For Vista(Student)

College of Professional and Continuing Education
The Hong Kong Polytechnic University

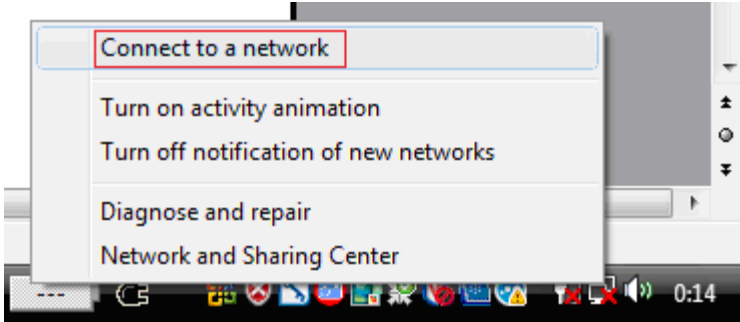
Version 3.1

HELPDESK	Location:	Tel no.
For HHB	11/F Computer Center	3746-0818
For WK	S5/F Computer Center	3746-0819

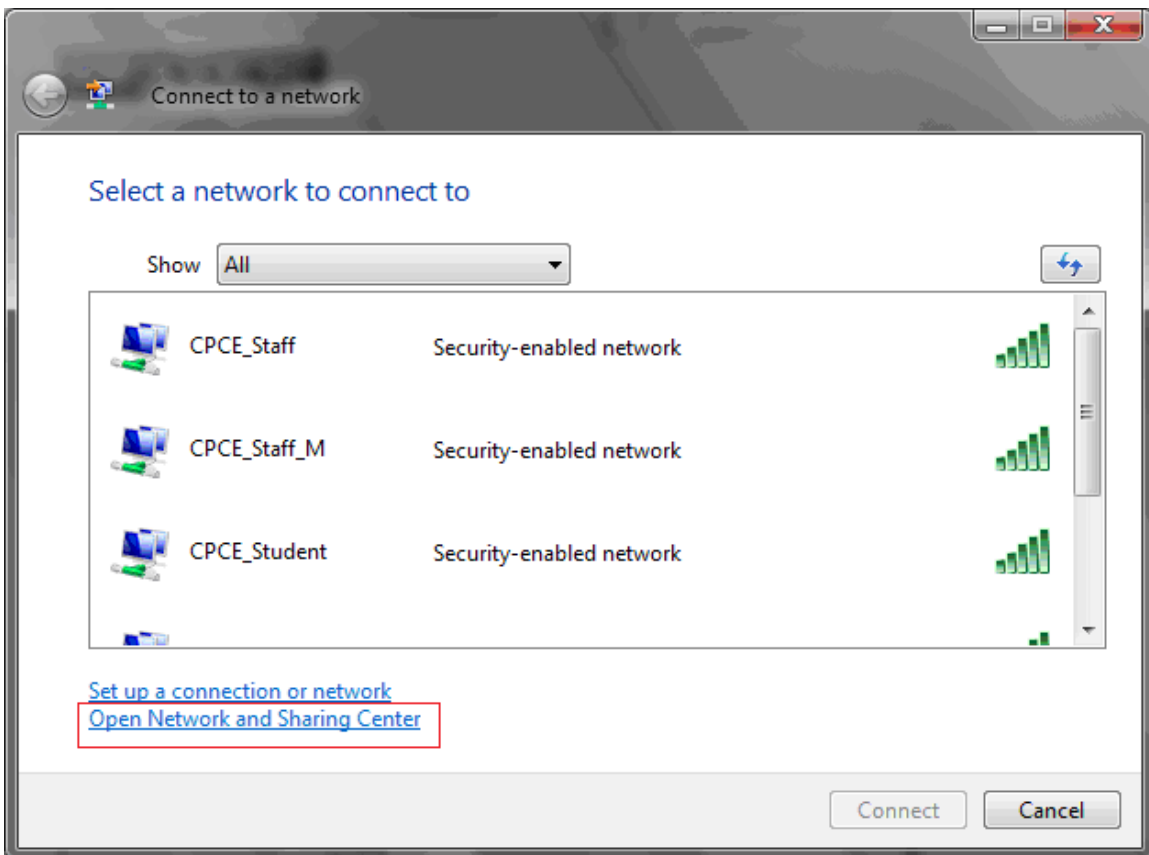
Email: pfitoper@cpce-polyu.edu.hk



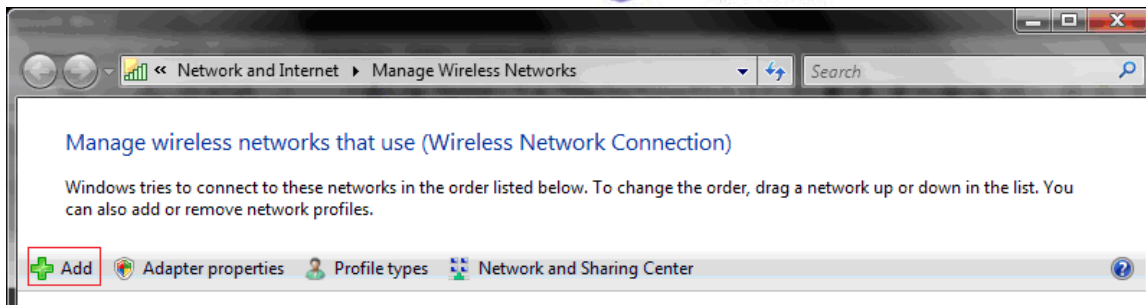
Click the “Network” icon to taskbar



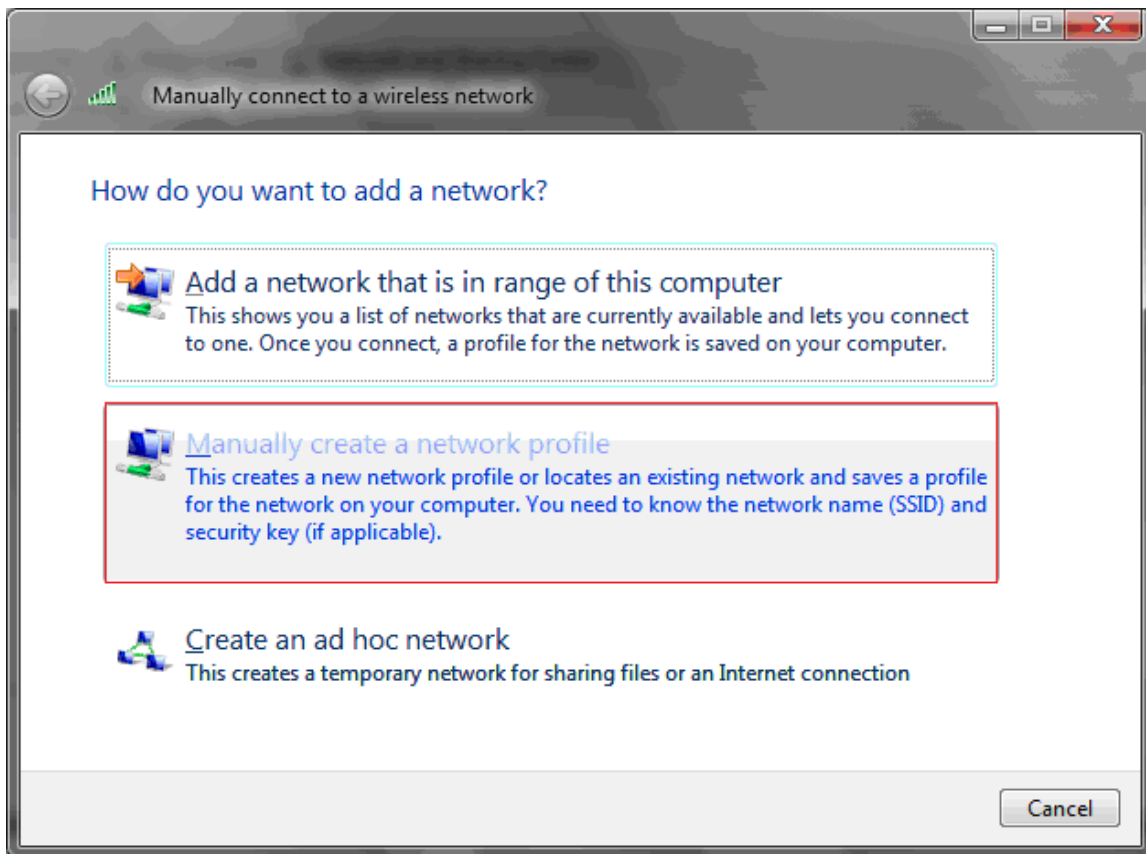
Right click to select “Connect to a network”



Click "Open network and Sharing Center"



Click "Add"



In the "Manually connect to a wireless network" window, Select "Manually create a network profile"

Manually connect to a wireless network

Enter information for the wireless network you want to add

Network name: ← 1

Security type: ← 2

Encryption type: ← 3

Security Key/Passphrase: Display characters

Start this connection automatically ← 4

Connect even if the network is not broadcasting
Warning: If you select this option, your computer's privacy might be at risk.

5 →

Change the settings of the followings in “Maunally connect to a wireless network” window.

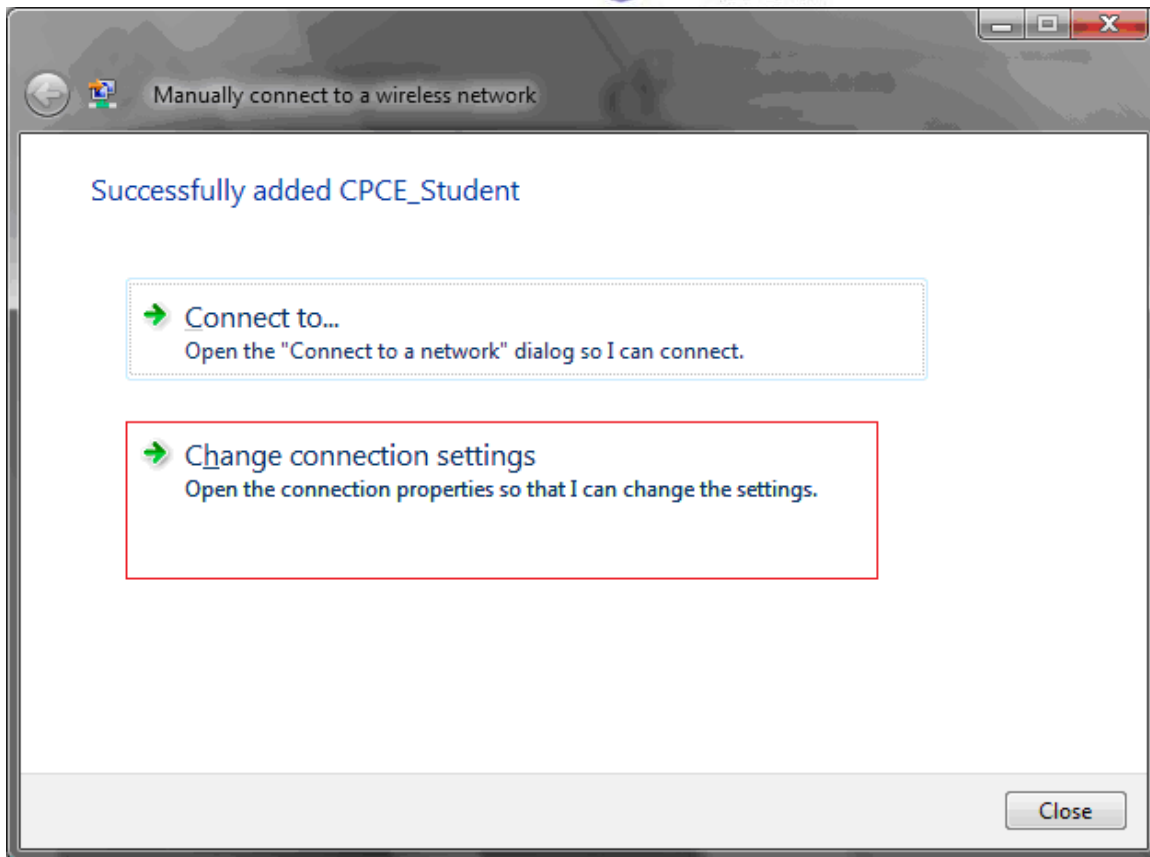
Network name: “CPCE_Student”

Security type: “WPA-Enterprise”

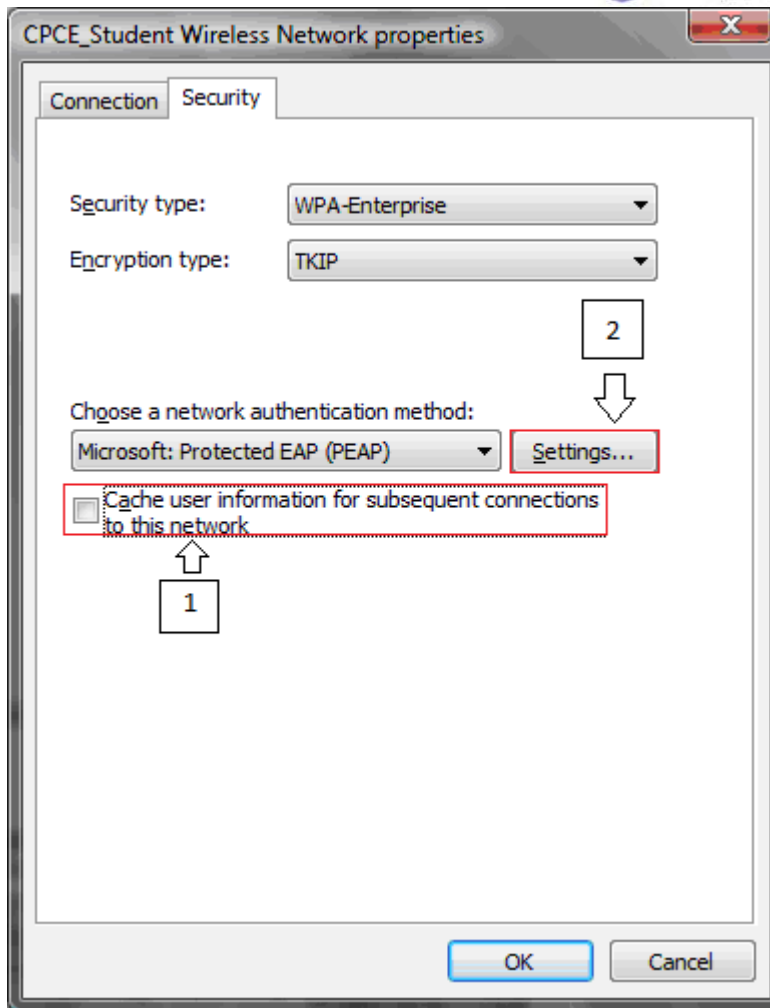
Encryption type: “TKIP”

Uncheck “Start this connection automatically”

Press “Next”

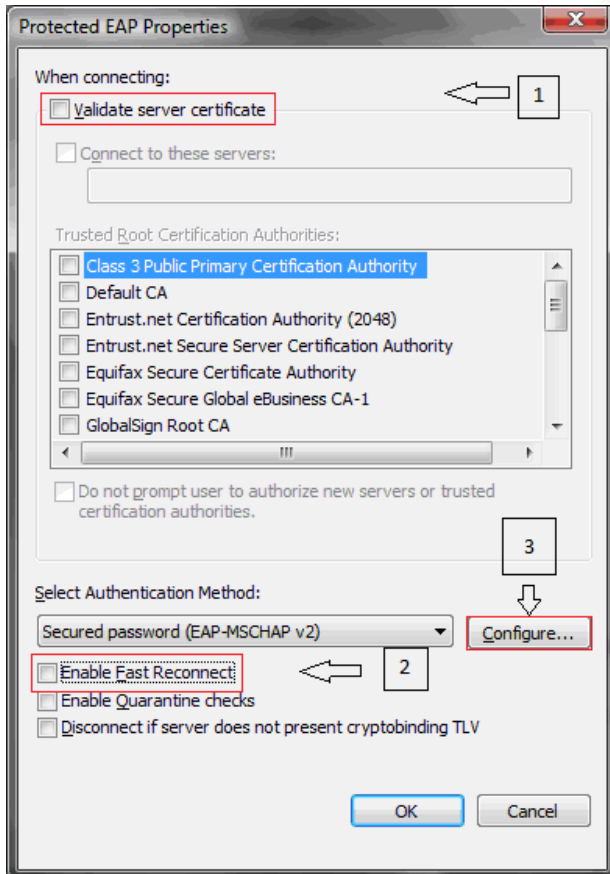


Press "Change connection settings"

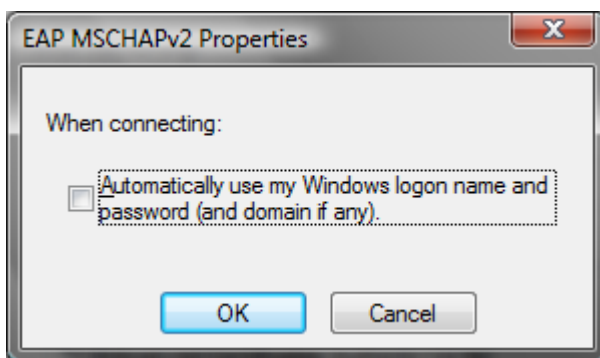


Select “Security” tab and change the settings of the followings in “Connection Settings” window

- . Uncheck “Cache user information for subsequent connections to this network”
- . Press “Settings”



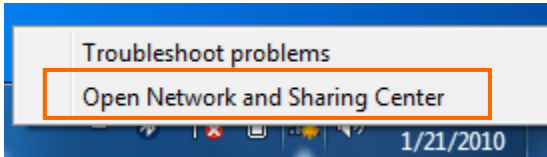
Change the settings of the followings in “Protected EAP Properties” window
Uncheck “Validate server certificate”
Uncheck “Enable Fast Reconnect”
Press “Configure”



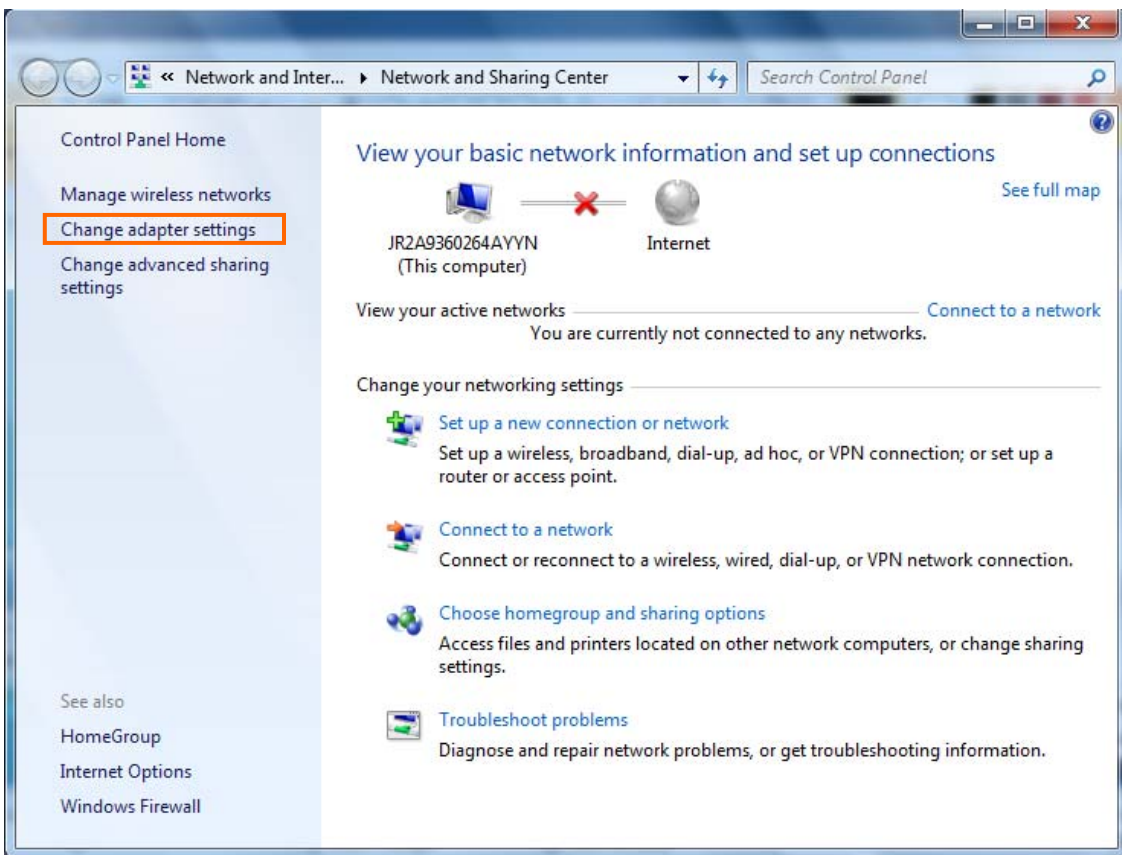
In the “EAP MSCHAPv2 Properties” window
Uncheck “Automatically use my Windows logon name and password (and domain if any)”
Press “OK”



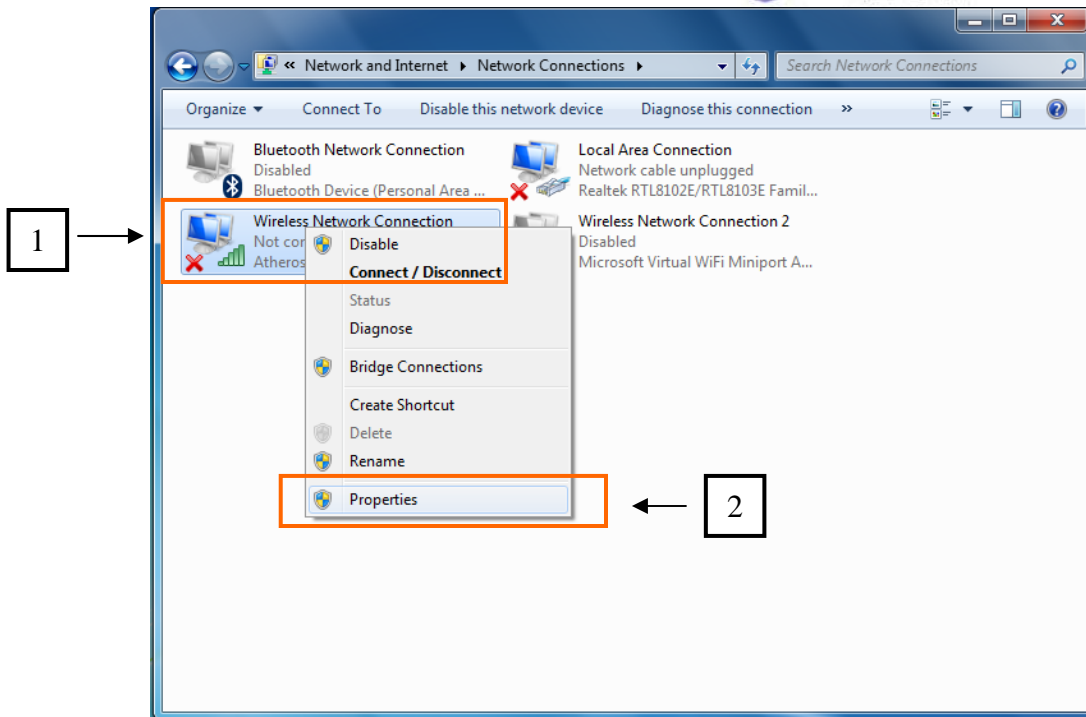
Click the “Network” icon to taskbar



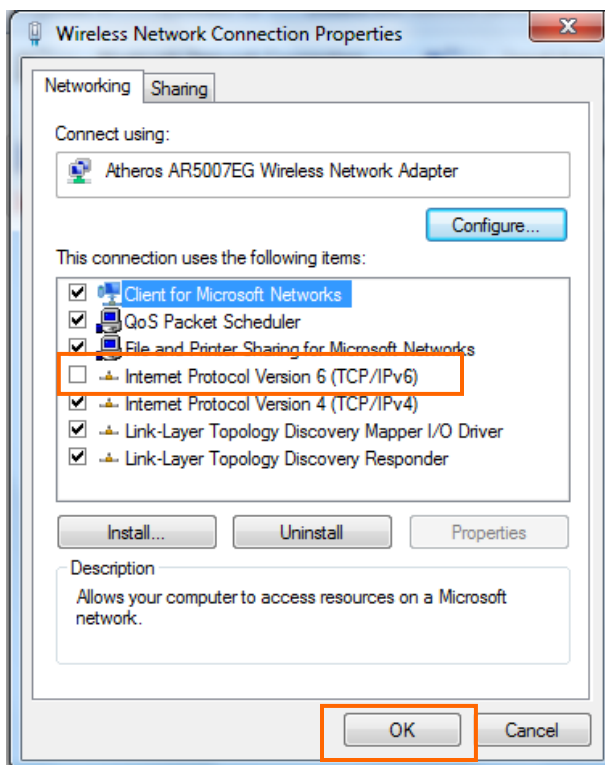
Click to select “Open Network and Sharing Center”



Click to select “Change adapter settings”



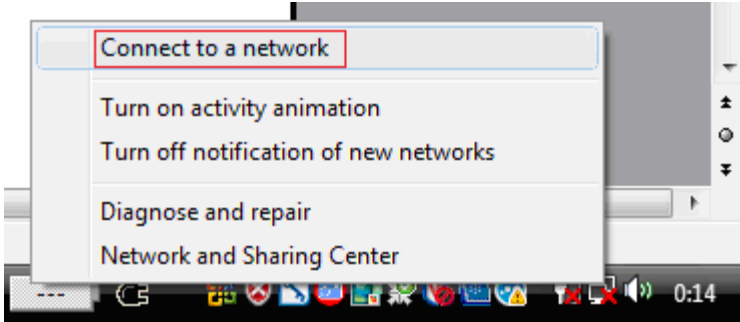
In the “Network Connections” window
Right click “wireless network connection“
Click “Properties”



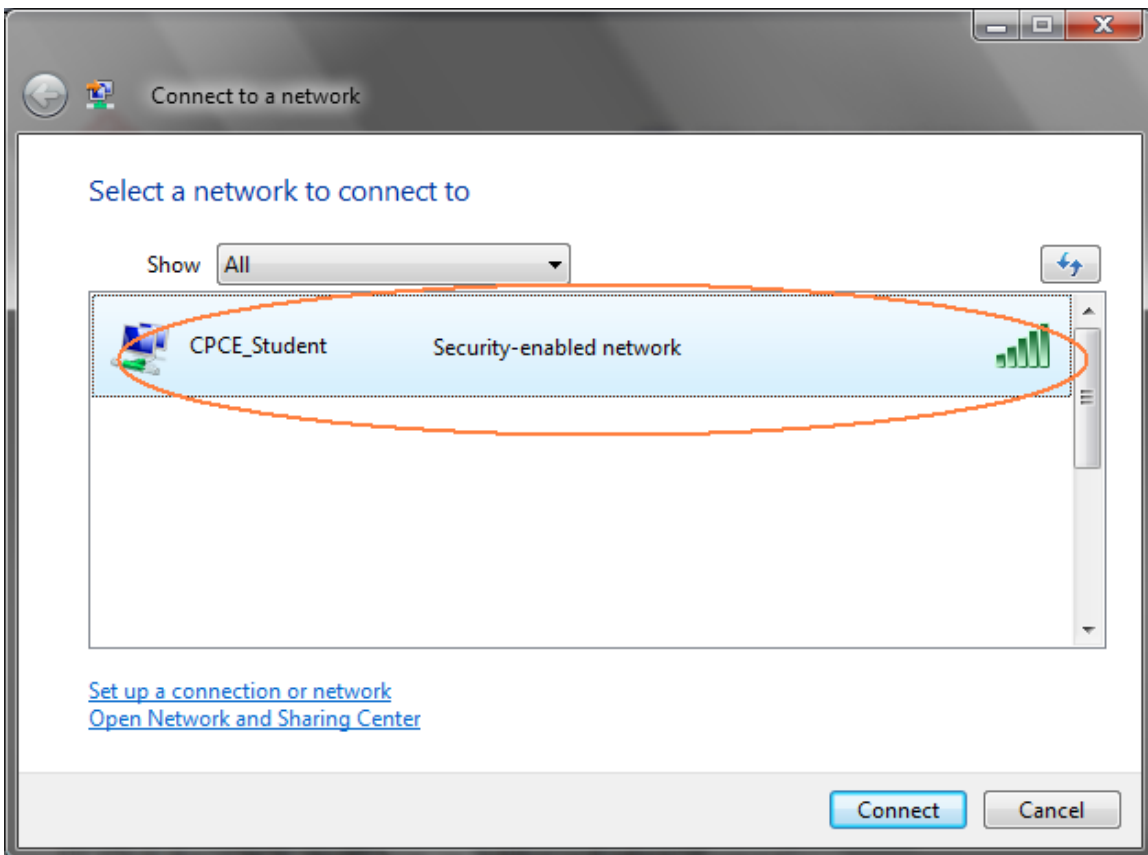
Uncheck “Internet Protocol Version 6 (TCP/IPV6)”
Click “OK”



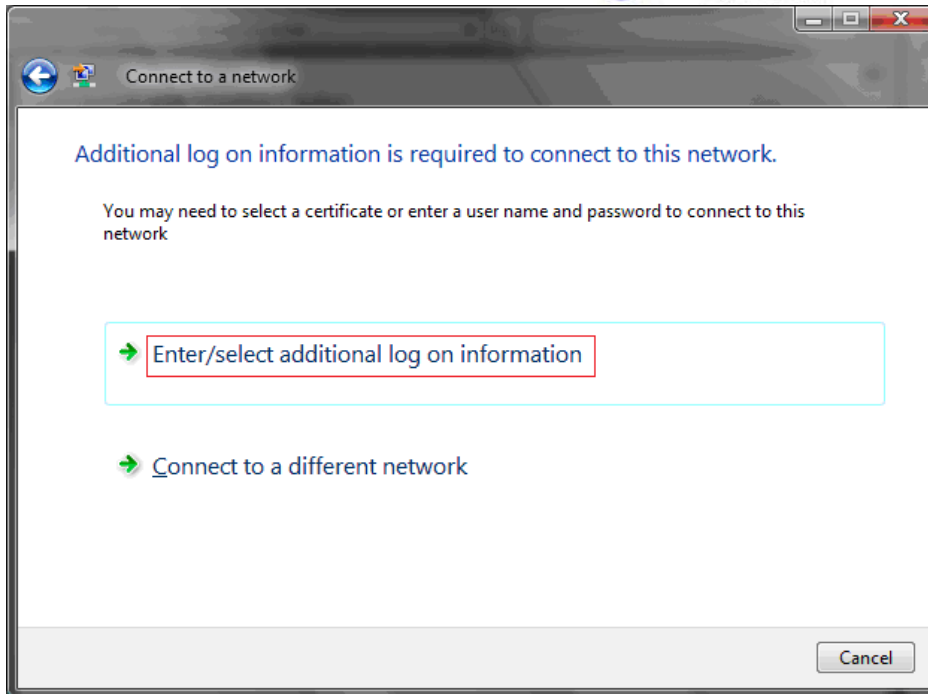
Click the “Network” icon to taskbar



Right click to select “Connect to a network”



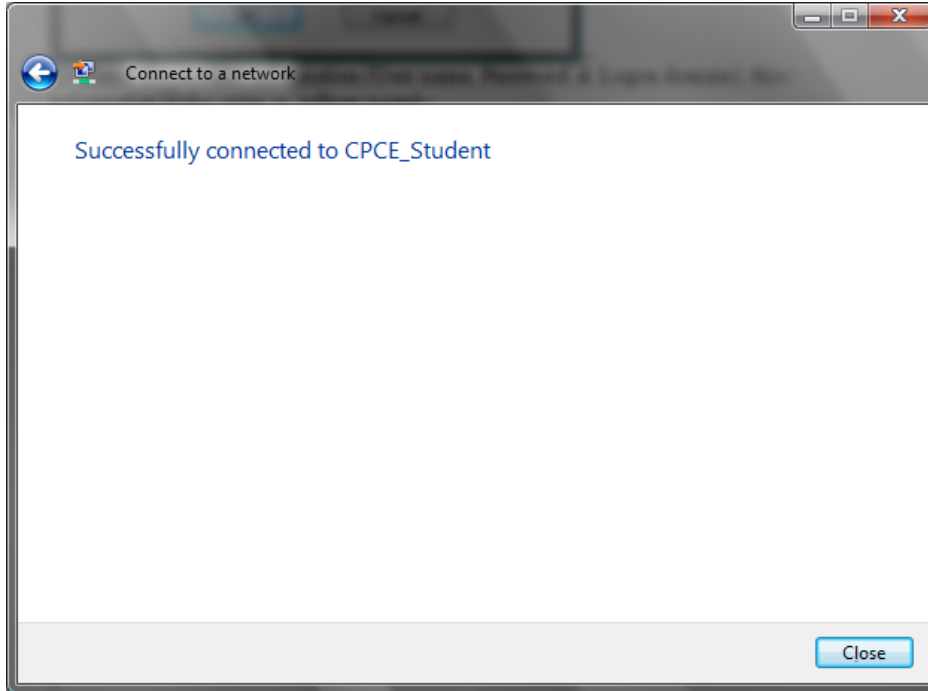
Click the “CPCE_Student” icon on taskbar and select “Connect”



Click "Enter/Select additional log on information"



Enter the account information (User name, Password & Logon domain), this information is the same as college portal



--- End ---